



# Bath Royal Literary & Scientific Institution

This prestigious venue is owned and managed by the Bath Royal Literary and Scientific Institution (BRLSI) and offers flexible and versatile spaces to suit your needs. It has long been established as a major centre for meetings, conferences, cultural events, exhibitions and private functions in Bath.

A Georgian venue in the heart of the historic city of

## Facilities

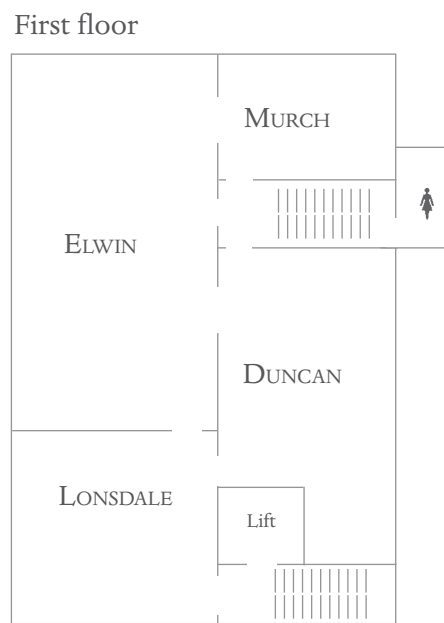
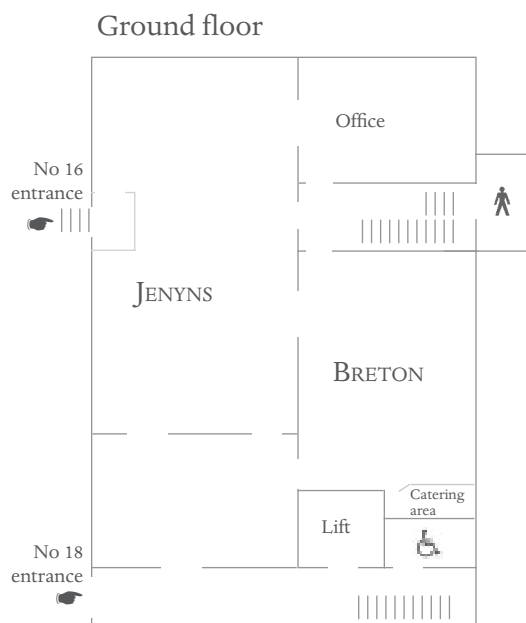
The premises have been refurbished to provide a variety of meeting and lecture rooms of different sizes for daytime and evening lettings. The first floor is fully accessible by lift and there are disabled toilet facilities.

There are several large rooms, while smaller gatherings can be accommodated in alternative private rooms of various sizes on both ground and first floors, some with integral catering facilities.

## Conferences

On the first floor there are facilities for full audio-visual presentations with seating for groups of up to a hundred people, in a large room enjoying natural daylight as well as full blackout capability. There are rooms interlinked to this main space for other activities such as breakout sessions, reception areas or catering.

Arrangement of furniture within the rooms is flexible and we can discuss your individual needs. Catering can be arranged.



## Contact

To arrange a visit or to discuss your needs, contact:

The Administrators,  
Bath Royal Literary & Scientific Institution,  
16-18 Queen Square,  
Bath BA1 2HN  
01225 312084.

Email: [admin@brlsi.org](mailto:admin@brlsi.org)  
Website: [www.brlsi.org](http://www.brlsi.org)

## The City

The BRLSI has the unique advantage of being located right in the centre of Bath, a World Heritage site, with all its amenities, including shopping, sightseeing, restaurants, theatres, bars and hotel accommodation.

## Access

Queen Square is a ten minute walk from the station and is easily accessible from the Park and Ride car parks around Bath. It is adjacent to Milsom Street, the main shopping location with its excellent shops and cafes. There is long-term parking around the corner in the Charlotte Street car park.

